



# LITTLE PENGUIN FACT SHEET

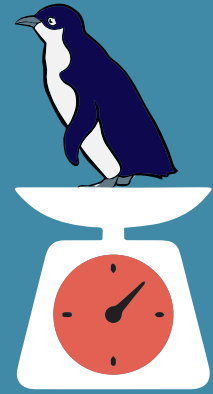
## How much do little penguins eat?

Around 25% of their body weight (around 250 g) per day.



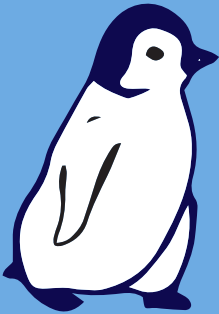
## How much do little penguins weight?

Around 1000 g or 1 kg.



## Which parent looks after the chicks?

Both male and female Little Penguins both look after eggs and chicks



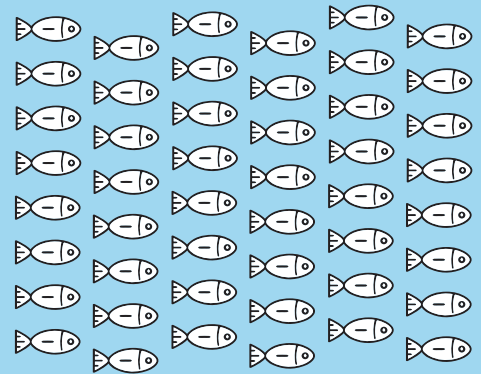
## How old are they before they can go to sea?

Little penguins fledge (leave the nest) around 8 weeks after hatching



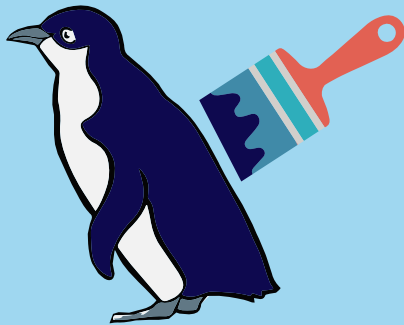
## What do little penguins eat?

Predominantly small fish like anchovy and pilchards.



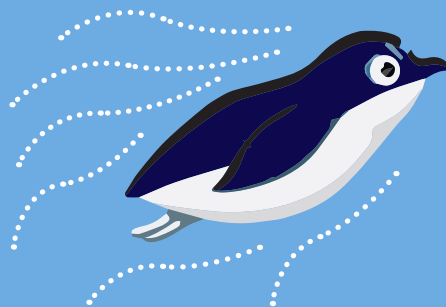
## What colour are little penguins?

The navy blue back and white front of the Little Penguin is for camouflage



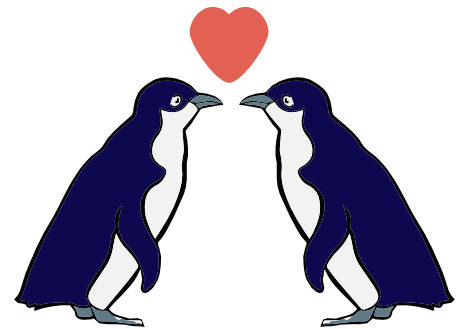
## How fast do they swim?

Little penguins can flap their flippers up to 5 times per second. They swim at an average speed of 2-4 km per hour but the fastest one on record was 6.4 km per hour which is faster than most humans!



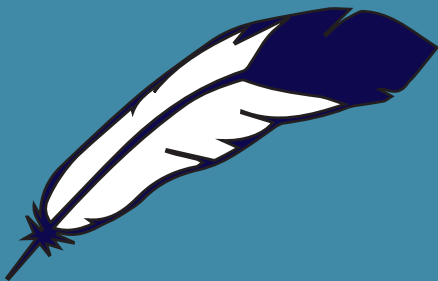
## Do they mate for life?

Not necessarily. The little penguin colony has around a 20% divorce rate, but this can be up to 50% depending on the colony and season.



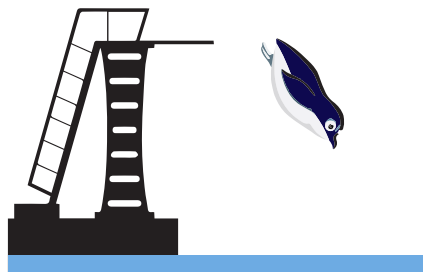
## How many feathers to little penguins have?

Around 10000.



## How deep do they dive?

The scientific name of the little penguin is *Eudyptula minor*. This means good little diver. They are fantastic in the water and usually dive 10 – 30 m. They dive between 200 and 13000 times per day.



## How tall are little penguins?

They are the smallest penguin in the world. They are approximately 33 cm tall.

